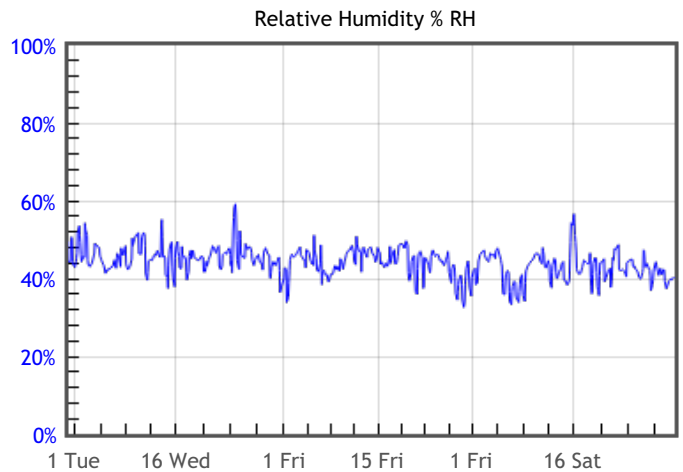
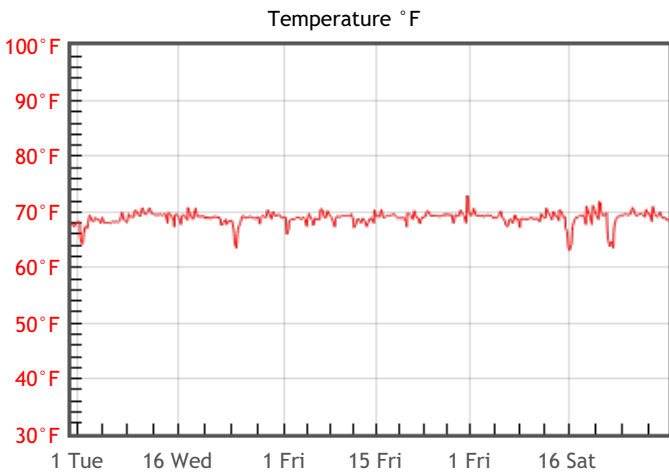


Preservation Environment Evaluation

Type of Decay	Risks & Metrics	Evaluation & General Comments
Natural Aging Chemical decay of organic materials	OK TWPI = 47	Generally OK, but fast decaying organic materials such as acidic paper, color photographs and cellulosic plastics will be at elevated risk due to the cumulative effects of temperature and humidity
Mechanical Damage Physical damage to hygroscopic materials	GOOD % DC = 0.17 % EMC min = 8 % EMC max = 8.6	Minimal risk of physical damage to most hygroscopic materials such as paintings, rare books and furniture.
Mold Risk Mold growth in area or on collection objects	GOOD MRF = 0	Minimal risk of mold growth.
Metal Corrosion Corrosion of metal components or objects	OK % EMC max = 8.6	Generally OK, but archeological or salt-encrusted metals may corrode due to extended periods of moderately high levels of humidity.

Graphs



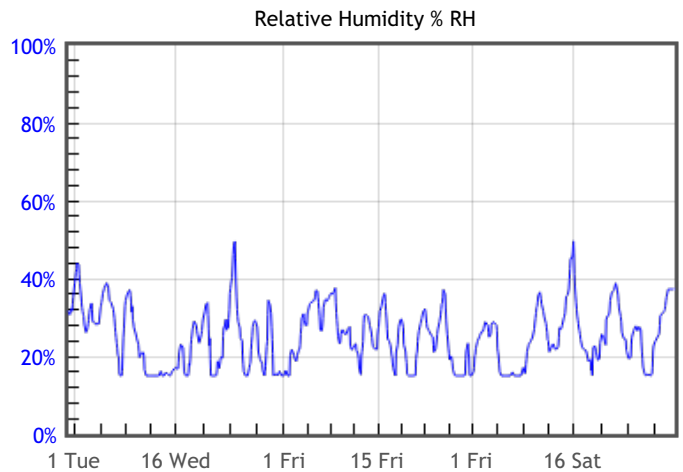
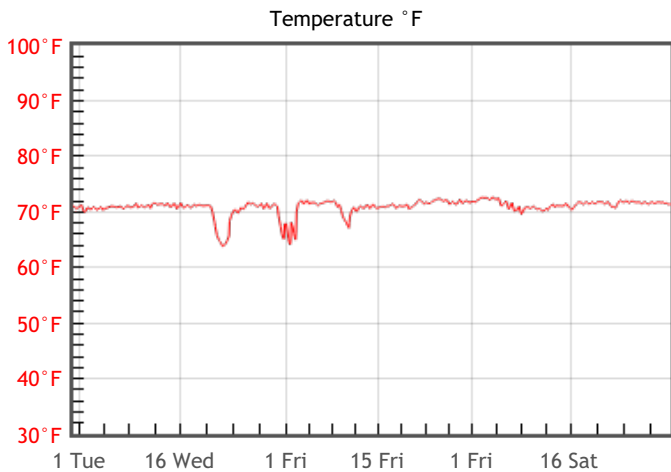
Statistics

Temperature		Relative Humidity		Dew Point	
T °F Mean	68.9	%RH Mean	44	DP °F Mean	46.1
T °F Median	69	%RH Median	44	DP °F Median	46.3
T °F Stdev	1.2	%RH Stdev	4	DP °F Stdev	2.5
T °F Min	62.7	%RH Min	33	DP °F Min	36.2
T °F Max	73.9	%RH Max	62	DP °F Max	53.2

Preservation Environment Evaluation

Type of Decay	Risks & Metrics	Evaluation & General Comments
Natural Aging Chemical decay of organic materials	OK TWPI = 68	Generally OK, but fast decaying organic materials such as acidic paper, color photographs and cellulosic plastics will be at elevated risk due to the cumulative effects of temperature and humidity
Mechanical Damage Physical damage to hygroscopic materials	GOOD % DC = 0.14 % EMC min = 5 % EMC max = 5.5	Minimal risk of physical damage to most hygroscopic materials such as paintings, rare books and furniture.
Mold Risk Mold growth in area or on collection objects	GOOD MRF = 0	Minimal risk of mold growth.
Metal Corrosion Corrosion of metal components or objects	GOOD % EMC max = 5.5	Minimal risk of metal corrosion.

Graphs



Statistics

Temperature		Relative Humidity		Dew Point	
T °F Mean	70.9	%RH Mean	25	DP °F Mean	32.2
T °F Median	71.2	%RH Median	25	DP °F Median	32.9
T °F Stdev	1.4	%RH Stdev	8	DP °F Stdev	8.1
T °F Min	63.7	%RH Min	15	DP °F Min	15.2
T °F Max	73.5	%RH Max	51	DP °F Max	51