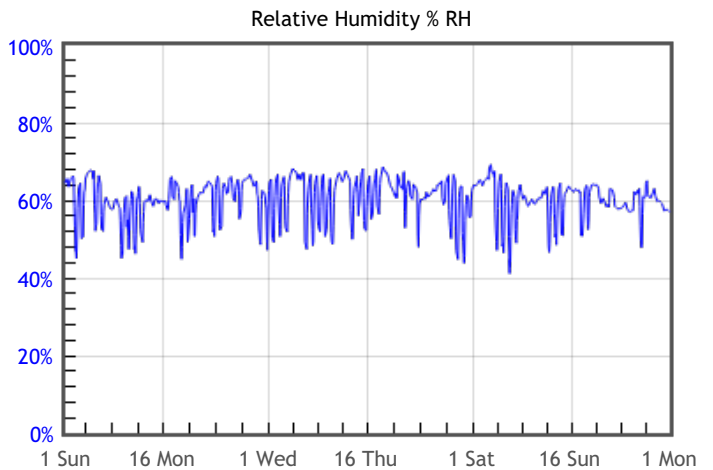
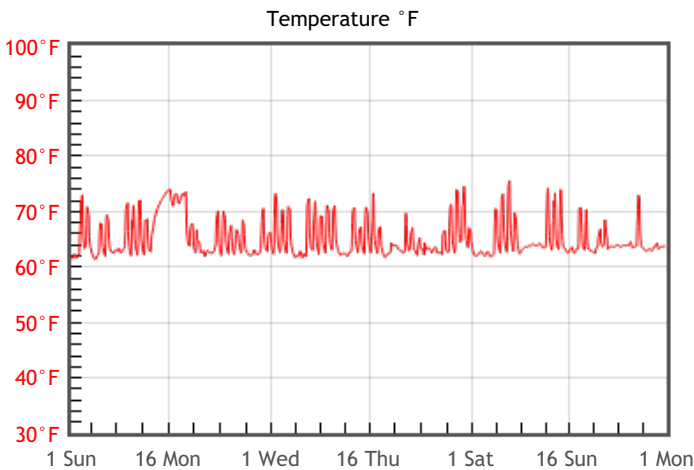


Preservation Environment Evaluation

Type of Decay	Risks & Metrics	Evaluation & General Comments
Natural Aging Chemical decay of organic materials	<div style="background-color: #800000; color: white; text-align: center; padding: 2px;">RISK</div> TWPI = 40	Accelerated rate of chemical decay in all organic materials due to the cumulative effects of temperature and humidity, with especially high risk for fast decaying organic materials such as acidic paper, color photographs and cellulosic plastics.
Mechanical Damage Physical damage to hygroscopic materials	<div style="background-color: #008000; color: white; text-align: center; padding: 2px;">GOOD</div> % DC = 0.14 % EMC min = 11 % EMC max = 11.5	Minimal risk of physical damage to most hygroscopic materials such as paintings, rare books and furniture.
Mold Risk Mold growth in area or on collection objects	<div style="background-color: #008000; color: white; text-align: center; padding: 2px;">GOOD</div> MRF = 0	Minimal risk of mold growth.
Metal Corrosion Corrosion of metal components or objects	<div style="background-color: #800000; color: white; text-align: center; padding: 2px;">RISK</div> % EMC max = 11.5	Heightened risk of metal corrosion due to extended periods of high levels of humidity.

Graphs



Statistics

Temperature		Relative Humidity		Dew Point	
T °F Mean	65.2	%RH Mean	60	DP °F Mean	51
T °F Median	63.7	%RH Median	61	DP °F Median	50.7
T °F Stdev	3.5	%RH Stdev	6	DP °F Stdev	2
T °F Min	61.1	%RH Min	41	DP °F Min	47.4
T °F Max	76.8	%RH Max	73	DP °F Max	61.5