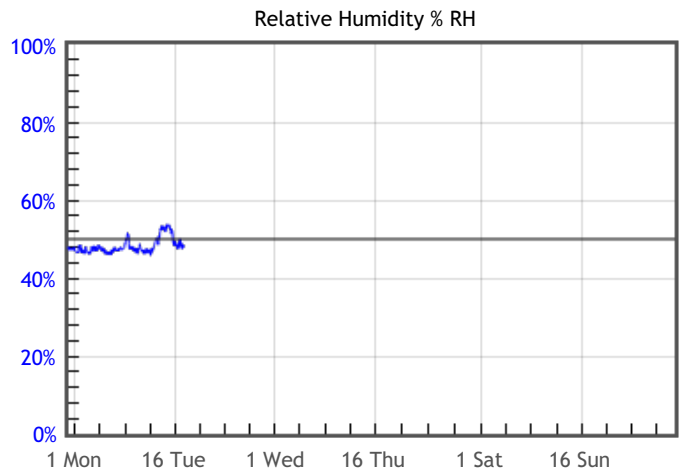
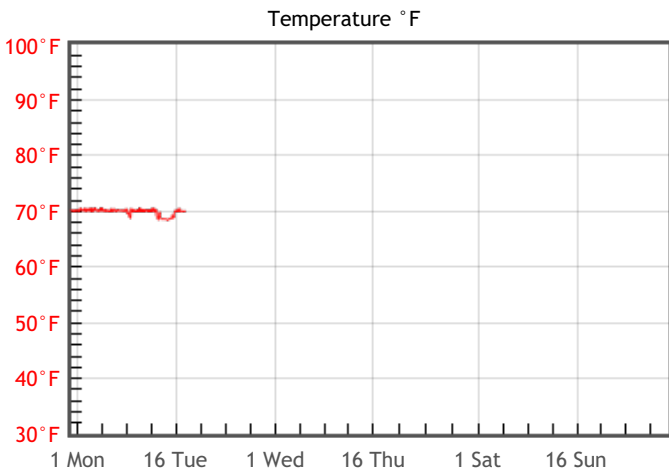


## Preservation Environment Evaluation

Type of Decay	Risks & Metrics	Evaluation & General Comments
<b>Natural Aging</b> Chemical decay of organic materials	<div style="background-color: #800000; color: white; text-align: center; padding: 2px;"><b>RISK</b></div> TWPI = 42	Accelerated rate of chemical decay in all organic materials due to the cumulative effects of temperature and humidity, with especially high risk for fast decaying organic materials such as acidic paper, color photographs and cellulosic plastics.
<b>Mechanical Damage</b> Physical damage to hygroscopic materials	<div style="background-color: #4CAF50; color: white; text-align: center; padding: 2px;"><b>GOOD</b></div> % DC = 0.05 % EMC min = 8.8 % EMC max = 9	Minimal risk of physical damage to most hygroscopic materials such as paintings, rare books and furniture.
<b>Mold Risk</b> Mold growth in area or on collection objects	<div style="background-color: #4CAF50; color: white; text-align: center; padding: 2px;"><b>GOOD</b></div> MRF = 0	Minimal risk of mold growth.
<b>Metal Corrosion</b> Corrosion of metal components or objects	<div style="background-color: #808080; color: white; text-align: center; padding: 2px;"><b>OK</b></div> % EMC max = 9	Generally OK, but archeological or salt-encrusted metals may corrode due to extended periods of moderately high levels of humidity.

## Graphs



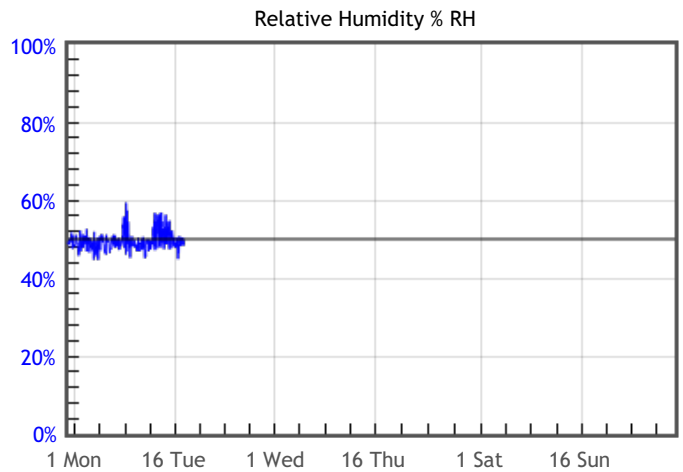
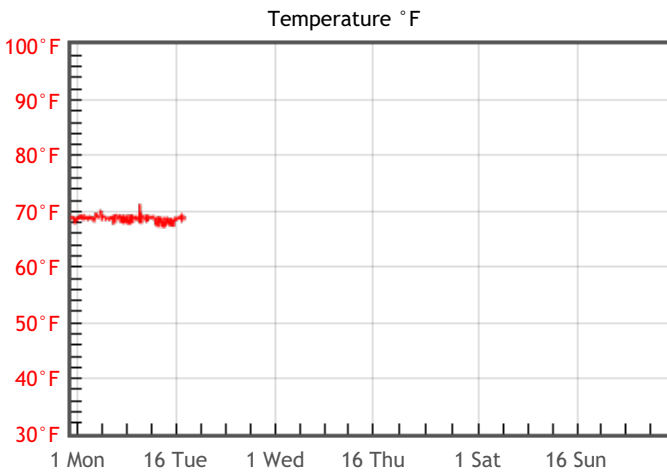
## Statistics

Temperature		Relative Humidity		Dew Point		T Limits		%RH Limits	
T °F Mean	69.9	%RH Mean	48	DP °F Mean	49.4	T °F < 2	0%	%RH < 50	84.8%
T °F Median	70.1	%RH Median	48	DP °F Median	49.2	T °F > 2	100%	%RH > 50	15.2%
T °F Stdev	0.6	%RH Stdev	2	DP °F Stdev	0.6				
T °F Min	68.4	%RH Min	46	DP °F Min	48.3				
T °F Max	70.8	%RH Max	54	DP °F Max	51.3				

## Preservation Environment Evaluation

Type of Decay	Risks & Metrics	Evaluation & General Comments
<b>Natural Aging</b> Chemical decay of organic materials	<div style="background-color: #800000; color: white; text-align: center; padding: 2px;"><b>RISK</b></div> TWPI = 43	Accelerated rate of chemical decay in all organic materials due to the cumulative effects of temperature and humidity, with especially high risk for fast decaying organic materials such as acidic paper, color photographs and cellulosic plastics.
<b>Mechanical Damage</b> Physical damage to hygroscopic materials	<div style="background-color: #4CAF50; color: white; text-align: center; padding: 2px;"><b>GOOD</b></div> % DC = 0.05 % EMC min = 9.1 % EMC max = 9.3	Minimal risk of physical damage to most hygroscopic materials such as paintings, rare books and furniture.
<b>Mold Risk</b> Mold growth in area or on collection objects	<div style="background-color: #4CAF50; color: white; text-align: center; padding: 2px;"><b>GOOD</b></div> MRF = 0	Minimal risk of mold growth.
<b>Metal Corrosion</b> Corrosion of metal components or objects	<div style="background-color: #808080; color: white; text-align: center; padding: 2px;"><b>OK</b></div> % EMC max = 9.3	Generally OK, but archeological or salt-encrusted metals may corrode due to extended periods of moderately high levels of humidity.

## Graphs



## Statistics

Temperature		Relative Humidity		Dew Point		T Limits		%RH Limits	
T °F Mean	68.7	%RH Mean	50	DP °F Mean	49	T °F < 2	0%	%RH < 50	67.7%
T °F Median	68.7	%RH Median	49	DP °F Median	48.9	T °F > 2	100%	%RH > 50	32.3%
T °F Stdev	0.6	%RH Stdev	2	DP °F Stdev	1.1				
T °F Min	66.9	%RH Min	45	DP °F Min	46.1				
T °F Max	71.3	%RH Max	59	DP °F Max	53.8				